

**A Comparison between Plastic and Metallic Biliary Stent Placement in Patients Receiving Preoperative Neoadjuvant Chemoradiotherapy for Resectable Pancreatic cancer**

Journal:	<i>World Journal of Surgery</i>
Manuscript ID	WJS-18-07-1284.R1
Manuscript Type:	Original Scientific Report (including Papers Presented at Surgical Conferences)
Date Submitted by the Author:	n/a
Complete List of Authors:	Nakamura, Kota; Nara Medical University, Department of Surgery Sho, Masayuki; Nara Medical University, Department of Surgery Akahori, Takahiro; Nara Medical University, Department of Surgery Nagai, Minako; Nara Medical University, Department of Surgery Nishiwada, Satoshi ; Nara Medical University, Department of Surgery Nakagawa, Kenji ; Nara Medical University, Department of Surgery Tanaka, Toshihiro ; Nara Medical University, Department of Radiology Kichikawa, Kimihiko ; Nara Medical University, Department of Radiology Tamamoto, Tetsuro; Nara Medical University, Department of Radiation Oncology Hasegawa, Masatoshi ; Nara Medical University, Department of Radiation Oncology Mitoro, Akira; Nara Medical University, Third Department of Internal Medicine Yoshiji, Hitoshi ; Nara Medical University, Third Department of Internal Medicine Ikeda, Naoya; Nara Medical University, Department of Surgery
Keywords:	Pancreas, Biliary

1  
2  
3  
4  
5  
6  
7  
8  
9  
10  
11  
12  
13  
14  
15  
16  
17  
18  
19  
20  
21  
22  
23  
24  
25  
26  
27  
28  
29  
30  
31  
32  
33  
34  
35  
36  
37  
38  
39  
40  
41  
42  
43  
44  
45  
46  
47  
48  
49  
50  
51  
52  
53  
54  
55  
56  
57  
58  
59  
60

Dear Editor:

Please find enclosed the revised version of our manuscript No. WJS-18-07-1284 entitled *A comparison between plastic and metallic biliary stent placement in patients receiving neoadjuvant chemoradiotherapy for pancreatic cancer*. We sincerely thank the reviewers for their valuable comments and careful consideration of our manuscript. We have revised manuscript as suggested by the reviewers and addressed all the issues raised by the reviewers.

Specific responses to the reviewers are as follows:

Responses to Reviewer #1:

1. Thank you for your kind suggestion. We have included the data of tumor response to neoadjuvant treatment in Table 1, and revised the Methods and Results accordingly. (Page 7 lines 10-11, Page 8 line 17) There were no significant differences in tumor response between two groups. Regarding patient enrollment, we excluded 8 patients who were found to be inoperable at the time of surgery after neoadjuvant chemoradiotherapy (NACRT). We have revised the details in Material and Methods section. (Page 6, lines 4-12)
2. Regarding the relationship between the reintervention rate and bacterial contamination, we have no data in this cohort. However, there was no significant association between reintervention rate and incidence of postoperative infectious complications. Now we have included the data of surgical site infection (SSI) in Table 2.
3. Thank you for your valuable question. Although reintervention occurred more frequently in the PS group than that in MS group, there were no significant differences in the incidence of organ-space SSI and superficial wound infection between the groups. As we described above, we have revised the Materials and Methods and included the actual data in Table 2. (Page 7 line 17)

Responses to Reviewer #2:

1. Thank you for your valuable suggestion. We have added “resectable” to the title and text.
2. We agree. According to the reviewer’s suggestion, we have revised the Abstract. (Page 3 lines 2-3)
3. Thank you for valuable comment. According to the reviewer’s suggestion, we have revised the Abstract and Introduction. (Page 3 lines 3-5, Page 5 lines 26-28)
4. According to the reviewer’s suggestion, we have revised the description throughout the manuscript.

- 1
- 2
- 3
- 4
- 5
- 6 5. We agree. We have revised the Methods in the Abstract. (Page 3 lines 6-10)
- 7
- 8 6. Thank you very much for the valuable comments. We have revised the conclusion in
- 9 the Abstract. (Page 3 line 19–Page 4 line 2).
- 10
- 11 7. To emphasize the novelty of the study, we have revised the last paragraph in the
- 12 Introduction. (Page 5 lines 19–28)
- 13
- 14 8. We have revised the Materials and Methods section, indicating that this is a
- 15 retrospective study. (Page 6 line 1)
- 16
- 17 9. Thank you again for your comment. We have revised the Methods section to clarify
- 18 the study design. (Page 6 lines 4–14) In this study, we analyzed only patients who
- 19 received biliary stent before receiving NACRT. In fact, there was no patient who
- 20 received biliary stent during NACRT in this study period.
- 21
- 22 10. As mentioned above, we analyzed only patients who received biliary stent before
- 23 receiving NACRT. We have described this point in the Materials and Methods
- 24 section. (Page 6 lines 4–5)
- 25
- 26 11. Thank you for your comment. According to the reviewer’s instruction, we have
- 27 moved these sentences to the Materials and Methods section. (Page 6 lines 11–14)
- 28
- 29 12. Thank you again for your valuable suggestion. We have added a new figure showing
- 30 a representative case in the MS group. Accordingly, we have added the figures and
- 31 revised the Materials and Methods section and figure legends. (Figure 1, Page 6
- 32 lines 14-15, Page 16 lines 2–7)
- 33
- 34
- 35
- 36

37 Responses to Reviewer #3:

- 38
- 39
- 40 1. We agree with the reviewer’s criticism. This study was retrospective, and the
- 41 number of enrolled patients was relatively small. Therefore, it is difficult to reach a
- 42 definitive conclusion. However, there are few studies focused on stent method for
- 43 biliary drainage before neoadjuvant chemoradiotherapy for resectable pancreatic
- 44 cancer. We think that it is one unsolved question in daily clinical practice. Therefore,
- 45 our data may provide some useful information.
- 46
- 47 2. We are sincerely sorry for confusion and insufficient explanation about the stent
- 48 patency and reintervention rates. The stent patency for both groups was
- 49 demonstrated using the Kaplan–Meier method in original Figure 1. To avoid
- 50 misunderstanding, we deleted Table 2 and revised the Materials and Methods. (Page
- 51 7 line 12) Moreover, we described the details of reintervention in the Results. (Page
- 52 8 lines 22–26)
- 53
- 54 3. Thank you for your question. Our study included the delays in getting to surgery
- 55
- 56
- 57
- 58
- 59
- 60

1  
2  
3  
4  
5 that were due to both NACRT and stent related complications. Only one patient  
6 experienced interstitial pneumonia, and had delays in getting to surgery. The other  
7 patients had delays due to stent related complications. We have revised the Results.  
8 (Page 9 lines 2-3)  
9

- 10  
11 4. We thank the reviewer for raising this important point. The novelty about our study  
12 was that MS placement was associated with long patency and did not have an  
13 economic disadvantage even during the preoperative 3 months. Accordingly, we  
14 revised the Abstract and manuscript. (Page 3 line 19–Page 4 line 1, Page 10 line 22,  
15 Page 11 lines 6–9)  
16  
17 5. We also thank for the reviewer’s comment. The efficacy was evaluated in terms of  
18 stent patency, various perioperative and postoperative outcomes as well as medical  
19 cost. The safety was evaluated regarding severe complications. We revised the  
20 Introduction and Methods section. (Page 5 lines 26–28)  
21  
22 6. Thank you again for your valuable comment. Although there were no significant  
23 differences between MS and PS, MS was superior to PS in stent patency and tended  
24 to be better in reintervention rate. Therefore, MS may be recommended for  
25 preoperative biliary placement in patients receiving preoperative NACRT for  
26 resectable pancreatic cancer. We revised the conclusion in the Abstract and  
27 manuscript. (Page 4 lines 1–2, Page 11 lines 9–10)  
28  
29  
30  
31

32 Thank you very much for your time and consideration. We look forward to your  
33 favorable reply.  
34  
35

36 Masayuki Sho, M.D. Ph.D.  
37 Department of Surgery  
38 Nara Medical University  
39 840 Shijo-cho, Kashihara, Nara  
40 634-8522, JAPAN  
41 Phone: +81-744-29-8863, Fax: +81-744-24-6866  
42 E-mail: [m-sho@naramed-u.ac.jp](mailto:m-sho@naramed-u.ac.jp)  
43  
44  
45  
46  
47  
48  
49  
50  
51  
52  
53  
54  
55  
56  
57  
58  
59  
60

1  
2  
3  
4  
5  
6  
7  
8  
9  
10  
11  
12  
13  
14  
15  
16  
17  
18  
19  
20  
21  
22  
23  
24  
25  
26  
27  
28  
29  
30  
31  
32  
33  
34  
35  
36  
37  
38  
39  
40  
41  
42  
43  
44  
45  
46  
47  
48  
49  
50  
51  
52  
53  
54  
55  
56  
57  
58  
59  
60

Title:

**A Comparison between Plastic and Metallic Biliary Stent Placement in Patients Receiving Preoperative Neoadjuvant Chemoradiotherapy for Resectable Pancreatic cancer**

Authors:

Kota Nakamura<sup>1</sup> · Masayuki Sho<sup>1</sup> · Takahiro Akahori<sup>1</sup> · Minako Nagai<sup>1</sup> · Satoshi Nishiwada<sup>1</sup> · Kenji Nakagawa<sup>1</sup> · Toshihiro Tanaka<sup>2</sup> · Kimihiko Kichikawa<sup>2</sup> · Tetsuro Tamamoto<sup>3</sup> · Masatoshi Hasegawa<sup>3</sup> · Akira Mitoro<sup>4</sup> · Hitoshi Yoshiji<sup>4</sup> · Naoya Ikeda<sup>1</sup>

<sup>1</sup> Department of Surgery, Nara Medical University, 840 Shijo-cho, Kashihara, Nara 634-8522, Japan

<sup>2</sup> Department of Radiology, Nara Medical University, 840 Shijo-cho, Kashihara, Nara 634-8522, Japan

<sup>3</sup> Department of Radiation Oncology, Nara Medical University, 840 Shijo-cho, Kashihara, Nara 634-8522, Japan

<sup>4</sup> Third Department of Internal Medicine, Nara Medical University, 840 Shijo-cho, Kashihara, Nara 634-8522, Japan

Correspondence:

Masayuki Sho

Address: Shijo-cho, Kashihara, Nara 634-8522, Japan

1  
2  
3  
4  
5  
6  
7  
8  
9  
10  
11  
12  
13  
14  
15  
16  
17  
18  
19  
20  
21  
22  
23  
24  
25  
26  
27  
28  
29  
30  
31  
32  
33  
34  
35  
36  
37  
38  
39  
40  
41  
42  
43  
44  
45  
46  
47  
48  
49  
50  
51  
52  
53  
54  
55  
56  
57  
58  
59  
60

Telephone: 81-744-22-3051

Fax: 81-744-24-6866

Email: [m-sho@naramed-u.ac.jp](mailto:m-sho@naramed-u.ac.jp)

Running head:

Biliary plastic stent for pancreatic cancer during NACRT

Keywords; Biliary stent, Neoadjuvant chemoradiotherapy, Pancreatic cancer

**Disclosures**

Authors Nakamura, Sho, Akahori, Nagai, Nishiwada, Nakagawa, Tanaka, Kichikawa, Tamamoto, Hasegawa, Mitoro, Yoshiji and Ikeda have no conflicts of interest or financial ties to disclose.

**Words**

Abstract 228 words

Text 2161 words

**Abstract**

*Background:* The optimal stent type in patients receiving preoperative neoadjuvant chemoradiotherapy (NACRT) is uncertain. The present study aimed to compare the clinical effectiveness of biliary metallic stent (MS) and plastic stent (PS) in patients undergoing preoperative NACRT for resectable pancreatic cancer.

*Methods:* This retrospective study included 43 patients who required either biliary MS or PS before initiating NACRT for resectable or borderline resectable pancreatic head cancer. Seventeen patients had MS (MS group), while 23 patients had PS (PS group). All patients received preoperative NACRT, including gemcitabine and concomitant 3-dimensional radiation of 54 Gy, and underwent pancreatectomy. Stent patency, surgery postponement, postoperative outcomes, and cost effectiveness were compared between these groups.

*Results:* There were no significant differences in baseline demographic or tumor characteristics between the groups. Stent patency was significantly longer in the MS group than in the PS group ( $P = 0.042$ ). There were no differences in time to surgery, intraoperative characteristics, surgical complications, margin positivity, and pathological response between the groups. Furthermore, the medical cost of maintenance of biliary drainage during NACRT was similar between the groups.

*Conclusions:* MS placement compared to PS in patients receiving preoperative NACRT provided no significant benefits during the postoperative course of pancreatectomy. However, MS placement was associated with long stent patency while showing no

1  
2  
3  
4  
5  
6  
7  
8  
9  
10  
11  
12  
13  
14  
15  
16  
17  
18  
19  
20  
21  
22  
23  
24  
25  
26  
27  
28  
29  
30  
31  
32  
33  
34  
35  
36  
37  
38  
39  
40  
41  
42  
43  
44  
45  
46  
47  
48  
49  
50  
51  
52  
53  
54  
55  
56  
57  
58  
59  
60

economic disadvantage. Therefore, MS placement may be recommended in patients receiving preoperative NACRT for resectable pancreatic cancer.



## Introduction

Despite improvements in the diagnosis and treatment of pancreatic cancer, its prognosis remains extremely poor. Although surgery is the only option to potentially cure pancreatic cancer, most patients die from local and distant recurrence [1–3]. In recent years, neoadjuvant chemoradiotherapy (NACRT) has drawn attention for application in resectable and borderline resectable pancreatic cancer with a focus on improving prognosis [4–8].

Obstructive jaundice is the most common symptom in patients with pancreatic head cancer, and thus patients often require preoperative biliary drainage before NACRT. A recent report has suggested that routine preoperative biliary drainage might increase the rate of perioperative complications [9]. However, reduction of the serum total bilirubin level and maintenance of biliary drainage during the preoperative period are essential for patient safety during NACRT.

Placement of a metallic stent (MS) or plastic stent (PS) is the most common approach for achieving biliary drainage. The major advantages of a MS over a PS are its long patency and low occlusion rate, whereas the major disadvantage of a MS over a PS is its high cost. Several studies have shown that MS placement for unresectable malignancies is superior to PS placement with regard to both stent patency and avoidance of endoscopic reintervention [10–15]. In contrast, studies comparing the safety and usefulness of a biliary MS with those of a biliary PS for preoperative biliary drainage during NACRT are limited [16–19]. A recent study demonstrated that MSs had economic advantages in neoadjuvant settings, which focused on treatments for a period of >5 months. However, PSs may be more advantageous in cost for shorter periods of NACRT. In fact, as far as we know, no study addressed the optimal stent type in patients undergoing preoperative NACRT with an identical protocol for a period of  $\leq 3$  months. The present study aimed to compare the clinical effectiveness including stent patency, perioperative and postoperative outcomes, and medical cost in patients who underwent preoperative NACRT for resectable pancreatic cancer.

## Material and Methods

### *Patients*

1  
2  
3  
4 Data were identified retrospectively from our institutional database. We reviewed  
5 the data of patients who received preoperative NACRT for resectable or borderline  
6 resectable pancreatic head cancer between January 2008 and January 2017 at the Nara  
7 Medical University Hospital. A total of 54 patients who underwent biliary drainage for  
8 obstructive jaundice before NACRT were included in the study. All patients were  
9 evaluated for the absence of evidence of distant metastasis using multi-detector  
10 computed tomography before NACRT. Patients who were treated with an endoscopic  
11 nasobiliary drainage (ENBD) or percutaneous drainage at the beginning of NACRT (n =  
12 3) and who were found to be inoperable at time of surgery with MS (n = 3) and PS (n =  
13 5) were excluded from the study. Of these patients, three with MS and 1 with PS  
14 experienced disease progression. Therefore, we enrolled 43 patients in whom complete  
15 resection was performed after NACRT. Seventeen patients who received a biliary  
16 self-expandable MS before initiating NACRT were classified into a MS group, whereas  
17 26 patients who received a biliary PS were classified into a PS group. The  
18 representative case in the MS group was shown in Figure 1. The ethics committee of the  
19 Nara Medical University approved the study.  
20  
21  
22  
23  
24  
25  
26  
27  
28  
29  
30

### 31 *Preoperative biliary drainage*

32  
33 The MSs were covered or uncovered self-expandable stents with a diameter of 8  
34 or 10 mm, and all MSs were placed in our hospital. When primary drainage was  
35 performed with ENBD or percutaneous drainage, MS placement was performed using a  
36 two-step procedure. MS placement was decided by the clinician. The PSs ranged in  
37 diameter from 7 to 8.5 Fr, and were placed endoscopically in a single step.  
38  
39  
40  
41  
42

### 43 *Preoperative neoadjuvant chemoradiotherapy*

44 The preoperative NACRT regimen included gemcitabine (GEM) and concomitant  
45 3-dimensional radiation at 54 Gy, as previously reported [20, 21]. Systemic GEM (1000  
46 mg/m<sup>2</sup>) was administered weekly. Radiotherapy was delivered through four portal fields  
47 (anterior, posterior, right, and left) for a single course of 50 Gy in 25 fractions using a  
48 10-megavoltage photon beam (Primus; Toshiba/Siemens, Otawara, Japan), or through  
49 5–9 fields for a single course of 54 Gy in 27 fractions with the intensity-modulated  
50 radiation technique using a 6-megavoltage photon beam (Novalis Shaped Beam Surgery  
51  
52  
53  
54  
55  
56  
57  
58  
59  
60

1  
2  
3  
4 System; BRAINLAB, Heinsteten, Germany). Surgery was performed within 3–5 weeks  
5 after the completion of preoperative NACRT.  
6  
7

### 8 ***Evaluation of outcomes***

9  
10 Data on patient demographics, preoperative treatments, surgical treatments, and  
11 postoperative outcomes were obtained through a standardized retrospective review of  
12 the electronic database of the Nara Medical University. Stage classification and resected  
13 specimen evaluation were performed according to the seventh edition of the  
14 AJCC/UICC TNM classification [22, 23]. Resectability was classified according to the  
15 NCCN guidelines, version 2. 2016. The radiological response was assessed by  
16 Response Evaluation Criteria in Solid Tumors version 1.1 (RECIST 1.1).  
17  
18

19  
20 The evaluated outcomes in this study were the stent patency during NACRT and  
21 the period from the beginning of NACRT to surgery. Furthermore, intraoperative  
22 characteristics, postoperative complications, mortality, hospital stay, resection margins,  
23 and pathological response were assessed. R0 resection was defined as no microscopic or  
24 macroscopic tumor. Postoperative complications included pancreatic fistula formation,  
25 delayed gastric emptying, organ-space surgical site infection, superficial wound  
26 infection, postoperative hemorrhage, and total postoperative complications, according  
27 to the Clavien-Dindo classification ( $\geq$  Grade IIIa) [24]. Pancreatic fistula formation was  
28 defined according to the guidelines of the International Study Group of Pancreatic  
29 Fistula [25]. Postoperative hemorrhage was defined according to the guidelines of the  
30 International Study Group of Pancreatic Surgery [26]. Mortality was defined as death  
31 within 90 days after surgery. Pathological response was assessed according to Evans  
32 classification.  
33  
34  
35  
36  
37  
38  
39  
40  
41  
42  
43

### 44 ***Economic cost of maintaining biliary drainage in preoperative NACRT***

45  
46 Cost analysis was performed to assess the economic impact of maintaining  
47 preoperative biliary drainage with a biliary stent. Charges were determined for the  
48 biliary stent and delivery system, endoscopic retrograde cholangiopancreatography  
49 (ERCP) with stent placement, stent exchange or cleaning, medications for ERCP, and  
50 hospital stay. Charges related to emergency admission for reintervention, including  
51 charges for ERCP with stent exchange or cleaning, emergency hospital stay, and  
52  
53  
54  
55  
56  
57  
58  
59  
60

1  
2  
3  
4 additional emergency procedures, were also estimated. These costs were estimated in  
5 US dollars (USD) according to data from the Nara Medical University in 2017. The  
6 additional cost for each of the stent placements was estimated according to data from  
7 the present study and according to the assumption that all MSs were placed  
8 endoscopically in a single-step procedure.  
9  
10  
11  
12

### 13 *Statistical analysis*

14  
15 Continuous variables were compared using the Mann-Whitney *U*-test or the *t*-test,  
16 while categorical variables were compared using the chi-square test or Fisher's exact  
17 test. All statistical analyses were performed using JMP 13.0 statistical software (SAS  
18 Institute Inc., Cary, NC, USA). A *P*-value <0.05 was considered statistically significant.  
19  
20  
21  
22  
23  
24

## 25 **Results**

### 26 *Patient characteristics*

27  
28 The patient characteristics are summarized in Table 1. There were no significant  
29 differences between the groups with regard to body mass index, prognostic nutrition  
30 index (PNI), CA19-9 level, total bilirubin level, tumor status, radiological response or  
31 surgical procedure.  
32  
33  
34  
35

### 36 *Stent patency and reintervention*

37  
38 Stent patency was significantly longer in the MS group than it was in the PS  
39 group (*P* = 0.042; Fig. 2). Regarding the causes of reintervention, stent occlusion  
40 occurred in 3 patients in the MS group and 9 patients in the PS group, whereas stent  
41 migration occurred in 4 patients in the PS group. In the MS group, two patients  
42 experienced reintervention once, and one patient experienced reintervention twice. In  
43 contrast, in the PS group, 12 patients experienced reintervention once, and 1 patient  
44 experienced reintervention thrice. The number of reinterventions per patient was  
45 estimated to be 0.24 in the MS group and 0.57 in the PS group. With respect to the  
46 reintervention procedure, stent cleaning was performed in the MS group, while  
47 exchange for another PS was performed in the PS group.  
48  
49  
50  
51  
52  
53  
54  
55  
56  
57  
58  
59  
60

### *Effects of biliary stenting on perioperative outcomes*

The time to surgery was 72 days in the MS group and 79 days in the PS group, and there was no significant difference between the groups. Only one patient in the MS group had delayed surgery due to interstitial pneumonia. Additionally, there were no differences in intraoperative characteristics and surgical complications between the two groups (Table 2). There were no significant differences in the occurrence of organ-space SSI and superficial wound infection between the groups. Moreover, there was no difference in mortality between the two groups. The incidences of a margin-negative outcome were 88% in the MS group and 97% in the PS group. There were no significant differences in the resection margins between the groups. Moreover, there were also no differences in the final pathological responses according to Evans classification between the two groups.

### *Economic impact of maintaining biliary drainage*

Table 3 shows the economic impact of main biliary stent placement with ERCP. The cost for planned initial placement of a MS was estimated to be 5,013 USD per patient. On the other hand, the cost for planned placement of a PS was estimated to be 3,308 USD per patient. Furthermore, the additional expense for reintervention and stent cleaning in the MS group was estimated to be 2,667 USD per patient. On the other hand, the additional expense for reintervention and emergency ERCP with stent exchange in the PS group was estimated to be 3,867 USD per patient. The estimated cost of maintenance of biliary drainage during NACRT was similar between the groups (MS group vs. PS group: 5,641 USD per patient vs. 5,539 USD per patient,  $P = 0.889$ ).

### **Discussion**

Although recent studies have shown that MS placement has a better patency duration and a lower incidence of reintervention compared to PS placement in patients with unresectable malignancies [10–15], the usefulness of MS during NACRT has not yet been adequately discussed. Several studies have reported that the reintervention rate for MS placement during NACRT ranges from 7% to 35%, while the rate for PS placement ranges from 45% to 93% [16–19, 27, 28]. All these studies have indicated

1  
2  
3  
4 that reintervention during NACRT is generally less frequent with MS placement than it  
5 is with PS placement. Consistent with these findings of previous studies, our study  
6 indicated that patency is longer and reintervention during NACRT is less frequent with  
7 MS placement than it is with PS placement. However, in this study, MS placement  
8 showed no significant advantages with regard to the time of surgery. Furthermore, there  
9 was no difference with regard to the completion of NACRT between MS and PS  
10 placement. Thus, the difference in stent patency between MS and PS placement was not  
11 associated with postponement of surgery and did not influence the completion of  
12 neoadjuvant treatment.  
13  
14

15  
16  
17  
18 With regard to the controversy of the adverse effects of preoperative biliary  
19 stenting on surgical complications, most studies reporting on the use of biliary stents to  
20 relieve jaundice included patients who underwent upfront surgery. A previous  
21 prospective randomized controlled trial demonstrated more frequent serious  
22 complications in patients who underwent preoperative biliary drainage with PSs than in  
23 those patients who underwent preoperative biliary drainage with MSs [29]. The increase  
24 in the overall complication rate was mainly associated with the high rate of biliary  
25 drainage-related complications and not surgery-related complications [29]. Studies on  
26 the association between biliary stent use and surgical complications in patients receiving  
27 NACRT are limited. We found that postoperative outcomes did not differ significantly  
28 between MS placement and PS placement. Our findings are consistent with the findings  
29 of a previous study by Kubota et al [18]. Although the rate of preoperative biliary  
30 stent-related complications was lower with MS placement than it was with PS  
31 placement, MS use during NACRT did not provide any benefits with regard to the  
32 postoperative course of pancreatectomy.  
33  
34  
35  
36  
37  
38  
39  
40  
41  
42

43 In the current study, MS use was not found to have a significant cost disadvantage  
44 in the cost effectiveness analysis. Although several studies have compared the cost  
45 effectiveness between MS and PS for biliary drainage during NACRT [17–19], the  
46 choice of biliary stent remains debatable. Economic issues should be considered in the  
47 use of MS, and MS placement should be reserved for patients who may actually benefit  
48 from the procedure, as the initial cost is high. Previous studies have shown that a MS  
49 has disadvantages with regard to palliation in patients with malignant strictures who  
50 survive for 3–6 months or less [30, 31]. Our results suggest that cost effectiveness is  
51  
52  
53  
54  
55  
56  
57  
58  
59  
60

1  
2  
3  
4 equivalent between placement of MS and PS when patients receiving NACRT have an  
5 anticipated therapy duration of about 3 months.  
6

7 The present study had several limitations. First, this study adopted a  
8 nonrandomized, retrospective design, and the number of patients was small. Moreover,  
9 this study was conducted at a single institution in Japan. A prospective randomized  
10 study should be performed to validate the results of this study. Moreover, further studies  
11 are necessary to determine efficient and well-tolerated approaches for biliary drainage  
12 during NACRT.  
13  
14  
15  
16

17 In conclusion, MS placement, compared to PS, in patients receiving preoperative  
18 NACRT, provided no significant benefits during the postoperative course of  
19 pancreatectomy. However, MS placement was associated with long stent patency while  
20 showing no economic disadvantage. Therefore, MS placement may be recommended in  
21 patients receiving preoperative NACRT for resectable pancreatic cancer.  
22  
23  
24  
25  
26  
27  
28  
29  
30  
31  
32  
33  
34  
35  
36  
37  
38  
39  
40  
41  
42  
43  
44  
45  
46  
47  
48  
49  
50  
51  
52  
53  
54  
55  
56  
57  
58  
59  
60

**References**

1. Traverso LW (2006) Pancreatic cancer: surgery alone is not sufficient. *Surg Endosc* 20:S446-S449.
2. Schnelldorfer T, Ware AL, Sarr MG, et al (2008) Long-term survival after pancreatoduodenectomy for pancreatic adenocarcinoma. *Ann Surg* 247:456-462.
3. Ferrone CR, Brennan MF, Gonen M, et al (2008) Pancreatic adenocarcinoma: The actual 5-year survivors. *J Gastrointest Surg* 12:701-706.
4. Chun YS, Milestone BN, Watson JC, et al (2010) Defining venous involvement in borderline resectable pancreatic cancer. *Ann Surg Oncol* 17:2832-8.
5. Laurence JM, Tran PD, Morarji K, et al (2011) A systematic review and meta-analysis of survival and surgical outcomes following neoadjuvant chemoradiotherapy for pancreatic cancer. *J Gastrointest Surg* 15:2059-2069.
6. Andriulli A, Festa V, Botteri E, et al (2012) Neoadjuvant/preoperative gemcitabine for patients with localized pancreatic cancer: A meta-analysis of prospective studies. *Ann Surg Oncol* 19:1644-1662.
7. Katz MHG, Wang H, Balachandran A, et al (2012) Effect of neoadjuvant chemoradiation and surgical technique on recurrence of localized pancreatic cancer. *J Gastrointest Surg* 16:68-79.
8. Papalezova KT, Tyler DS, Blazer DG, et al (2012) Does preoperative therapy optimize outcomes in patients with resectable pancreatic cancer? *J Surg Oncol* 106:111-118.
9. Niels AVDG, Erik AJR, Casper HJVE, et al (2010) Preoperative biliary drainage



- 1  
2  
3  
4  
5 for cancer of the head of the pancreas. *N Engl J Med* 362:129-137.  
6  
7 10. Davids PHP, Groen AK, Rauws EAJ, et al (1992) Randomised trial of  
8 self-expanding metal stents versus polyethylene stents for distal malignant biliary  
9 obstruction. *Lancet* 340:1488-1492.  
10  
11 11. Lammer J, Hausegger KA, Flückiger F, et al (1996) Common bile duct obstruction  
12 due to malignancy: treatment with plastic versus metal stents. *Radiology*  
13 201:167-172.  
14  
15 12. Soderlund C, Linder S (2006) Covered metal versus plastic stents for malignant  
16 common bile duct stenosis: a prospective, randomized, controlled trial.  
17 *Gastrointest Endosc* 63:986-995.  
18  
19 13. Isayama H, Yasuda I, Ryozaawa S, et al (2011) Results of a japanese multicenter,  
20 randomized trial of endoscopic stenting for non-resectable pancreatic head cancer  
21 (JM-TEST): Covered wallstent versus doublelayer stent. *Dig Endosc* 23:310-315.  
22  
23 14. Moses PL, Alnaamani KM, Barkun AN, et al (2013) Randomized trial in  
24 malignant biliary obstruction: Plastic vs partially covered metal stents. *World J*  
25 *Gastroenterol* 19:8638-8646.  
26  
27 15. Almadi MA, Barkun A, Martel M (2016) Plastic vs. self-expandable metal stents  
28 for palliation in malignant biliary obstruction: A series of meta-analyses. *Am J*  
29 *Gastroenterol* 1-14.  
30  
31 16. Wasan SM, Ross WA, Staerkel GA, Lee JH (2005) Use of expandable metallic  
32 biliary stents in resectable pancreatic cancer. *Am J Gastroenterol* 100:2056-2061.  
33  
34 17. Mullen JT, Lee JH, Gomez HF, et al (2005) Pancreaticoduodenectomy after  
35  
36  
37  
38  
39  
40  
41  
42  
43  
44  
45  
46  
47  
48  
49  
50  
51  
52  
53  
54  
55  
56  
57  
58  
59  
60

- 1  
2  
3  
4 placement of endobiliary metal stents. *J Gastrointest Surg* 9:1094-1105.  
5  
6  
7 18. Kubota K, Sato T, Watanabe S, et al (2014) Covered self-expandable metal stent  
8 deployment promises safe neoadjuvant chemoradiation therapy in patients with  
9 borderline resectable pancreatic head cancer. *Dig Endosc* 26:77-86.  
10  
11  
12  
13 19. Gardner TB, Spangler CC, Byanova KL, et al (2016) Cost-effectiveness and  
14 clinical efficacy of biliary stents in patients undergoing neoadjuvant therapy for  
15 pancreatic adenocarcinoma in a randomized controlled trial. *Gastrointest Endosc*  
16 84:460-466.  
17  
18  
19  
20  
21  
22 20. Sho M, Akahori T, Tanaka T, et al (2013) Pathological and clinical impact of  
23 neoadjuvant chemoradiotherapy using full-dose gemcitabine and concurrent  
24 radiation for resectable pancreatic cancer. *J Hepatobiliary Pancreat Sci*  
25 20:197-205.  
26  
27  
28  
29  
30  
31  
32 21. Sho M, Akahori T, Tanaka T, et al (2015) Optimal indication of neoadjuvant  
33 chemoradiotherapy for pancreatic cancer. *Langenbeck's Arch Surg* 400:477-485.  
34  
35  
36  
37 22. Sobin LH, GospodarowiczMK, Wittekind C, TNM classification of malignant  
38 tumours (2009), 7th edn. Wiley-Liss, New York.  
39  
40  
41  
42 23. Edge SB, Compton CC (2010) The American Joint Committee on Cancer: the 7th  
43 edition of the AJCC Cancer Staging Manual and the Future of TNM. *Ann Surg*  
44 *Oncol* 17:1471-1474.  
45  
46  
47  
48 24. Dindo D, Demartines N, Clavien P-A (2004) Classification of Surgical  
49 Complications. *Ann Surg* 240:205-213.  
50  
51  
52  
53 25. Bassi C, Dervenis C, Butturini G, et al (2005) Postoperative pancreatic fistula: An  
54  
55  
56  
57  
58  
59  
60

- 1  
2  
3  
4 international study group (ISGPF) definition. *Surgery* 138:8-13.  
5  
6  
7 26. Wente MN, Veit JA, Bassi C, et al (2007) Postpancreatectomy hemorrhage  
8 (PPH)-An International Study Group of Pancreatic Surgery (ISGPS) definition.  
9 *Surgery* 142:20-25.  
10  
11  
12  
13 27. Boulay BR, Gardner TB, Gordon SR (2010) Occlusion rate and complications of  
14 plastic biliary stent placement in patients undergoing neoadjuvant  
15 chemoradiotherapy for pancreatic cancer with malignant biliary obstruction. *J Clin*  
16 *Gastroenterol* 44:452-455.  
17  
18  
19  
20  
21 28. Aadam AA, Evans DB, Khan A, et al (2012) Efficacy and safety of  
22 self-expandable metal stents for biliary decompression in patients receiving  
23 neoadjuvant therapy for pancreatic cancer: A prospective study. *Gastrointest*  
24 *Endosc* 76:67-75.  
25  
26  
27  
28 29. Tol JA, van Hooft JE, Timmer R, et al (2015) Metal or plastic stents for  
29 preoperative biliary drainage in resectable pancreatic cancer. *Gut* 65:1981-1987.  
30  
31  
32  
33 30. Prat F, Chapat O, Ducot B, et al (1998) Predictive factors for survival of patients  
34 with inoperable malignant distal biliary strictures: a practical management  
35 guidelines. *Gut* 42:76-80.  
36  
37  
38  
39 31. Prat F, Chapat O, Ducot B, et al (1998) A randomized trial of endoscopic drainage  
40 methods for inoperable malignant strictures of the common bile duct. *Gastrointest*  
41 *Endosc* 47:1-7.  
42  
43  
44  
45  
46  
47  
48  
49  
50  
51  
52  
53  
54  
55  
56  
57  
58  
59  
60

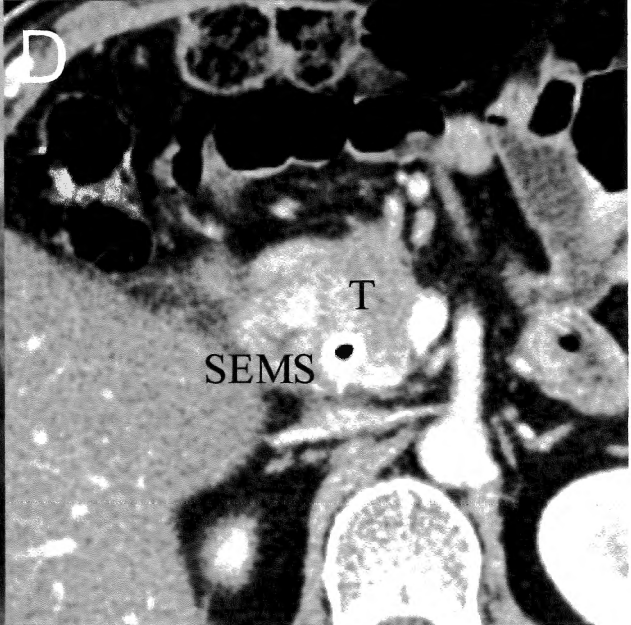
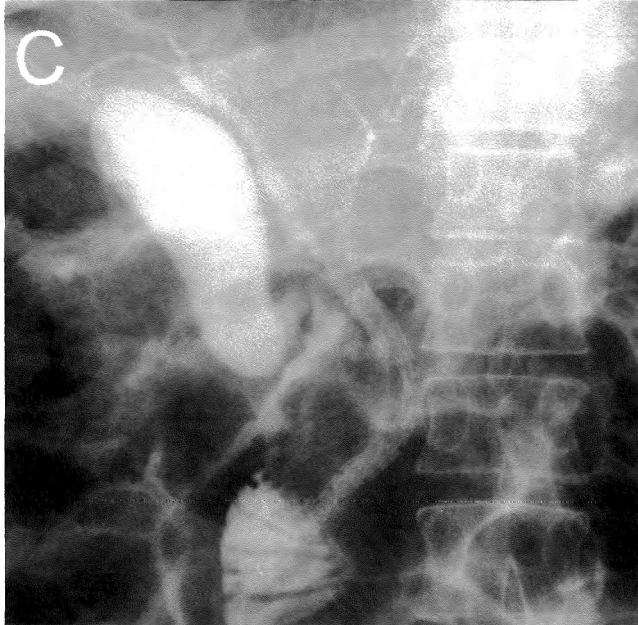
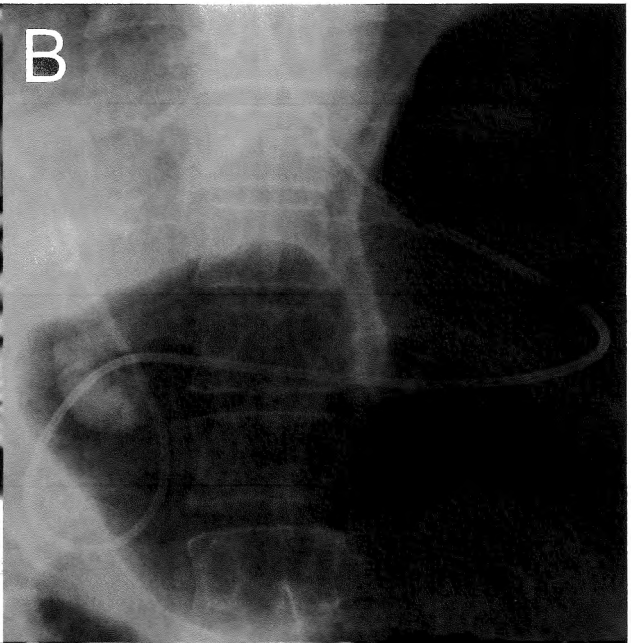
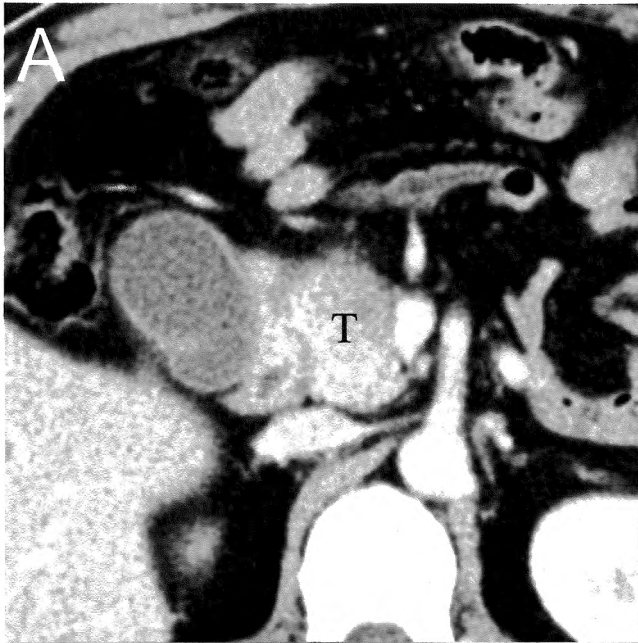
**Figure legends**

**Figure 1.** A representative case in the MS group. A; CT image showing a tumor abutting the portal vein. B; primary drainage with ENBD. C; Radiography showing patency and correct position of SEMS. D; CT image showing SEMS positioned across the biliary obstruction.

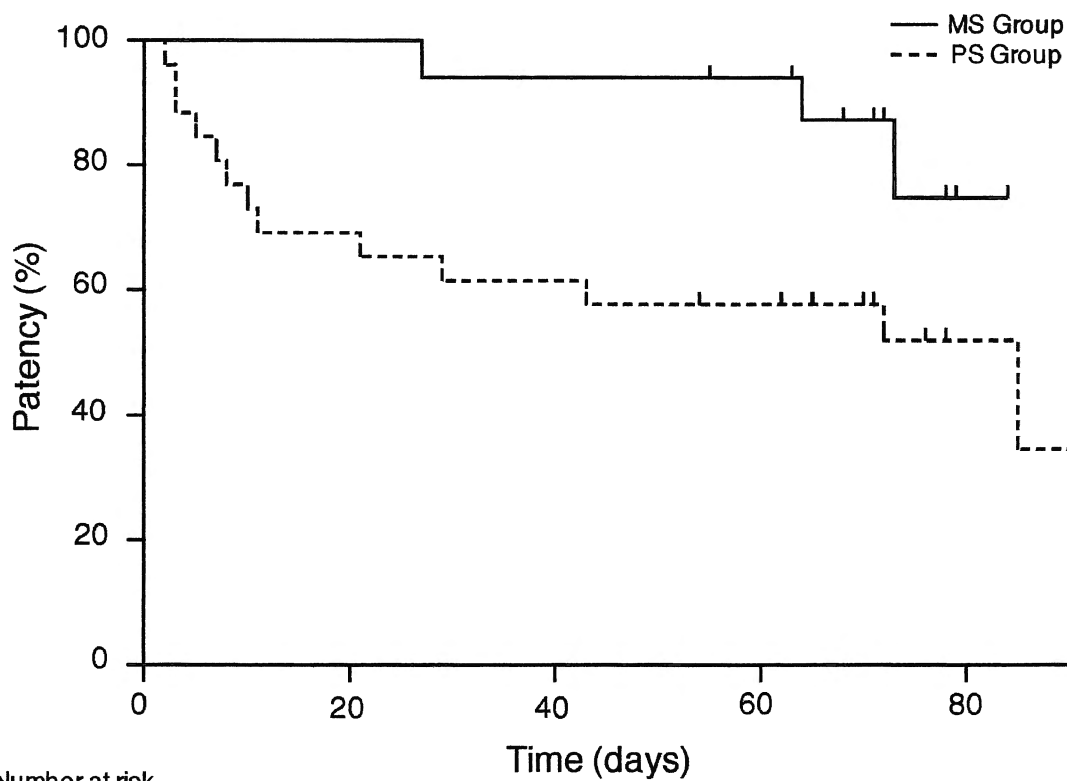
*T* tumor, *SEMS* self-expandable metallic stent, *MS* metallic stent. *ENBD* endoscopic nasobiliary drainage. *CT* Computed tomography.

**Figure 2.** Cumulative stent patency. Metallic stents (MS Group) were patent significantly longer than plastic stents (PS Group) ( $P = 0.042$ ).

1  
2  
3  
4  
5  
6  
7  
8  
9  
10  
11  
12  
13  
14  
15  
16  
17  
18  
19  
20  
21  
22  
23  
24  
25  
26  
27  
28  
29  
30  
31  
32  
33  
34  
35  
36  
37  
38  
39  
40  
41



1  
2  
3  
4  
5  
6  
7  
8  
9  
10  
11  
12  
13  
14  
15  
16  
17  
18  
19  
20  
21  
22  
23  
24  
25  
26  
27  
28  
29  
30  
31  
32  
33  
34  
35  
36  
37  
38  
39  
40  
41  
42  
43  
44  
45  
46  
47  
48  
49  
50  
51  
52  
53  
54  
55  
56  
57  
58  
59  
60



Number at risk

	0	20	40	60	80
MS	17	17	17	16	2
PS	26	19	17	14	6

**Table 1** Patients characteristics

	MS Group (n=17)	PS group (n=26)	
Age (years, median, range)	70 (52-76)	61 (36-76)	0.106
Gender			
Male	12 (70.6%)	12 (46.2%)	0.133
Female	5 (29.4%)	14 (53.9%)	
BMI (kg/m <sup>2</sup> , median, range)	20.4 (14.1-26.0)	21.4 (16.0-28.4)	0.559
PNI	39 (31-54)	41 (32-53)	0.363
CA19-9 (U/mL, median, range)	21 (10-872)	39 (1-789)	0.970
Total bilirubin level (mg/dL)	9.0 (1.4-34.6)	6.1 (1.3-22.0)	0.233
Resectability status			0.344
Resectable	8 (47.1%)	17 (65.4%)	
Borderline resectable	9 (52.9%)	9 (34.6%)	
pT (AGCC/UICC)			0.200
T1	2 (11.8%)	0 (0.0%)	
T2	1 (5.9%)	2 (7.7%)	
T3	14 (82.4%)	24 (92.3%)	
pN (AGCC/UICC)			0.296
N0	11 (64.7%)	21 (80.8%)	
N1	6 (35.3%)	5 (19.2%)	
pStage (AGCC/UICC)			0.354
IA	1 (5.9%)	0 (0.0%)	
IB	1 (5.9%)	2 (7.7%)	
IIA	9 (52.9%)	19 (73.1%)	
IIB	6 (35.3%)	5 (19.2%)	
Radiological response (RECIST 1.1)			0.138
Stable disease	11 (64.7%)	22 (84.6%)	
Partial response	6 (35.3%)	3 (11.5%)	
Complete response	0 (0.0%)	1 (3.9%)	
Procedure			1.000
Pancreatoduodenectomy	16 (94.1%)	25 (96.2%)	
Total pancreatectomy	1 (5.9%)	1 (3.9%)	

MS metallic stent, PS plastic stent, BMI body mass index, PNI prognostic nutrition index, CA19-9 CAR antigen19-9, NCCN National Comprehensive Cancer Network, AJCC American Joint Committee on Cancer, UICC Union for International Cancer Control, RECIST Response Evaluation Criteria in Solid Tumors

**Table 2** Perioperative outcomes

	MS Group (n=17)	PS group (n=26)	<i>P</i>
Period, NACRT-Surgery (days, median, range)	72 (55-107)	79 (54-115)	0.135
Completion of NACRT	17 (100.0%)	26 (100.0%)	1.000
Intraoperative characteristics			
Blood loss (mL, median, range)	522 (87-1100)	580 (20-6730)	0.260
Operative time (min, median, range)	307 (263-860)	328 (239-642)	0.911
Intraoperative transfusion	8 (47.1%)	11 (42.3%)	1.000
Postoperative complication			
Pancreatic fistula (ISGPF Grade B/C)	1 (5.9%)	2 (7.7%)	1.000
Delayed gastric emptying	0 (0.0%)	1 (3.9%)	1.000
Organ-space surgical site infection	2 (11.8%)	2 (7.7%)	1.000
Superficial wound infection	1 (5.9%)	2 (7.7%)	1.000
Hemorrhage	0 (0.0%)	1 (3.9%)	1.000
Any complication ( $\geq$ CDIIIa)	4 (23.5%)	5 (19.2%)	1.000
Mortality	1 (5.9%)	0 (0.0%)	0.395
Hospital stay (days, median, range)	16 (9-42)	16 (9-160)	0.470
Resection margin			0.430
Free	15 (88.2%)	25 (96.2%)	
Microscopic residual	1 (5.9%)	1 (3.9%)	
Macroscopic residual	1 (5.9%)	0 (0.0%)	
Pathological response (Evans grade)			0.535
IIA	10 (58.8%)	13 (50.0%)	
IIB	5 (29.4%)	11 (42.3%)	
III	2 (11.8%)	1 (3.9%)	
Unclassifiable	0(0.0%)	1 (3.9%)	

MS metallic stent, PS plastic stent, BMI body mass index, PNI prognostic nutrition index, CA19-9 CAR antigen19-9, NCCN National Comprehensive Cancer Network, AJCC American Joint Committee on Cancer, UICC Union for International Cancer Control



**Table 3** Economic impact of maintaining biliary drainage during neoadjuvant chemoradiotherapy

	MS Group	PS group	
<b>Initial biliary stent placement</b>			
Biliary stent placement (USD)	5,013	3,308	
Number of patients	17	26	
Total (USD)	85,221	86,008	
<b>Stent exchange or cleaning</b>			
Additional expense of reintervention (USD)	2,667	3,867	
Number of reintervention (times)	4	15	
Total (USD)	10,668	58,005	0.889

*MS* metallic stent, *PS* plastic stent, *NACRT* neoadjuvant chemoradiotherapy

1  
2  
3  
4  
5  
6  
7  
8  
9  
10  
11  
12  
13  
14  
15  
16  
17  
18  
19  
20  
21  
22  
23  
24  
25  
26  
27  
28  
29  
30  
31  
32  
33  
34  
35  
36  
37  
38  
39  
40  
41  
42  
43  
44  
45  
46  
47  
48  
49  
50  
51  
52  
53  
54  
55  
56  
57  
58  
59  
60